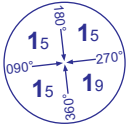
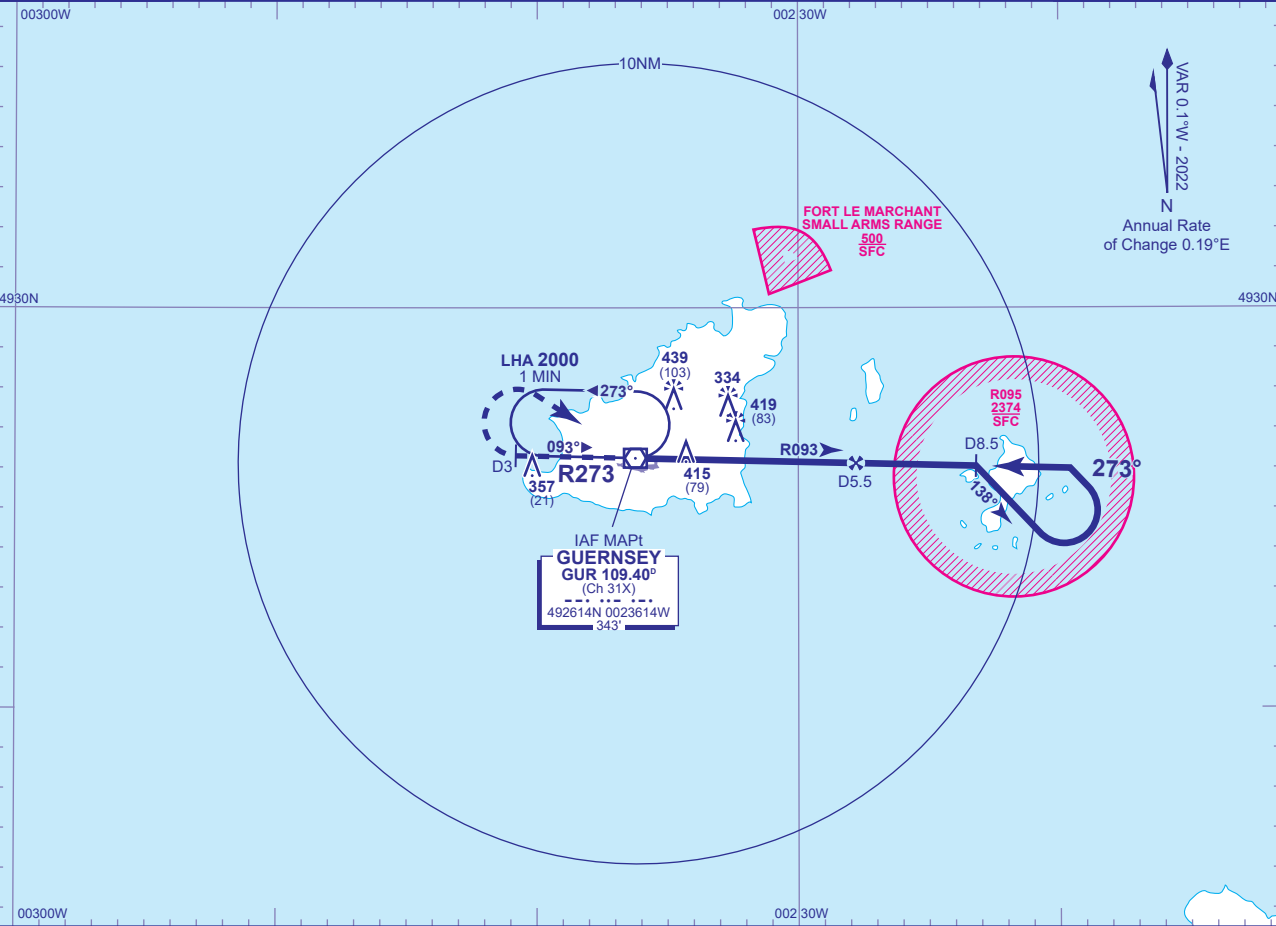


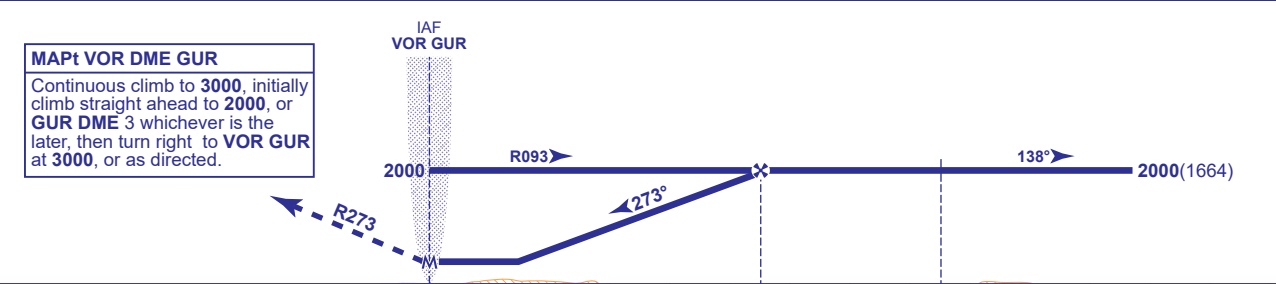
INSTRUMENT APPROACH CHART - ICAO

GUERNSEY
VOR/DME
RWY 27
(ACFT CAT A,B,C,D)

 MSA 25NM VOR GUR	APP	128.655	GUERNSEY APPROACH	AD ELEVATION	336	VOR/DME RWY 27 (ACFT CAT A,B,C,D)
	TWR	119.955	GUERNSEY TOWER	THR ELEVATION	336	
	GMC	121.805	GUERNSEY GROUND	OBSTACLE ELEVATION 439 AMSL (103) (ABOVE THR)		
	RAD	124.505	GUERNSEY RADAR			
	ATIS	109.400	GUERNSEY INFORMATION			
				BEARINGS ARE MAGNETIC		TRANSITION ALTITUDE 5000



RECOMMENDED PROFILE Gradient 5.24%, 320FT/NM				
DME GUR	5	4	3	2
ALT(HGT)	1850(1514)	1530(1194)	1210(874)	890(554)



DME GUR reads 0.4NM at THR RWY 27										
Aircraft Category		A	B	C	D	Rate of descent	G/S KT	160	140	120
OCA (OCH)	WITH DME	680(344)	680(344)	680(344)	680(344)		FT/MIN	850	740	640
	NO DME	730(394)	730(394)	730(394)	730(394)			850	740	640
VM(C)OCA (OCH AAL)		Total Area	830(494)	830(494)	930(594)	1030(694)				

AIRCRAFT UNABLE TO RECEIVE DME
As for main procedure with DME except fly outbound for 2 MIN prior to procedure turn right to establish on FAT. When established, descend to MDH.

NOTE 1 FAT offset 4° south from RWY 27 C/L.
2 Authority to penetrate restricted area R095 will be granted by Guernsey ATC prior to start of this procedure.
3 Aircraft will normally be required to hold not lower than 3000.

CHANGE (7/24): MAG VAR. ANNUAL RATE OF CHANGE.